

Connor Simpson

duo for Soprano and Bass Flute

there are no people

ca. 6'

2022

Mere Fly Press

For Personal Use Only

there are no people

Soprano and Bass Flute

circa 5 minutes

2022

Connor Simpson

Mere Fly Press (ASCAP)

Program Notes:

there are no people explores feelings of loneliness in crowded places. The work questions the existence of the unknown people who decorate a city. Those who we will never meet and will never know us.

Text:

by Connor Simpson

There are no people in the cars which drive by me.

There are no people in the buildings I walk past.

empty

No

Blank

The sun beats down on empty mirrors,

Empty mirrors filled with the sky.

A beautiful, dying, unattainable expanse an arm's length away.

Something overflowing with nothing,

Something which does not see me.

An empty city crowded with no one,

No one who comes from nowhere.

No one who has no name.

No one who I may never see again.


In the reflection in the eyes of no one,

I cannot see myself.

Performance Notes:

In the absence of a time signature, the performers are to approximate the timing of events based on the position within the system. Each system is to take approximately 15-20 seconds with room for interpretation from the performers. (Note that some quick passages would appear cluttered if spaced properly and are beamed as 32nd notes to indicate they are to be played as quickly as possible.)

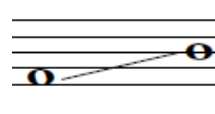
 Open noteheads are to be sustained for the duration indicated by the line following the note.

 Solid noteheads represent quick attack points and are not to be sustained.

 Dashed vertical lines between staves indicate that two events are to be played simultaneously

 Denotes text to be spoken, interpretation of text is left to the performer's discretion.

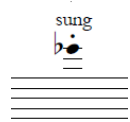
 Represent quarter tone accidentals, from left to right: quarter sharp, three quarter sharp, quarter flat, three quarter flat

 A diagonal line between pitches for both the vocalist and flutist represents a portamento, to gradually slide between tones. Only sustain the final tone if indicated by an open notehead and line. Some portamentos in the flute may need to be approximated with multiple successive portamentos.

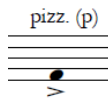
Soprano:

[n^] IPA (International Phonetic Alphabet) is given for many sounds of the piece. IPA will always appear in a pair of brackets

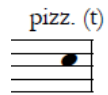
Bass Flute:



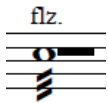
Sung pitches are transposed an octave up to match the instrument.



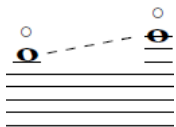
Mimicking a string pizzicato with a “P” sound from the lips.



Mimicking a string pizzicato with a “T” sound from the tongue.



Flutter tongue, a “rolled R” sound with the tongue while sustaining a pitch.



A dashed diagonal line between pitches represents a gradual change in embouchure between two harmonics. The pitch should only speak for a portion of the duration surrounded by air sounds.

[n^] IPA within the flute part is always to be vocalized into the mouthpiece of the instrument

there are no people

for Sydeboob Duo

Senza Misura

Soprano

Bass Flute

* Not a true portamento but rather a gradual change in embouchure between harmonics. Pitches should only speak for a portion of the duration. *

2

S

There are

B. Fl.

3

S

[n] - [n^] [n] - [n^] [n] - [n^] [n^] [n] - [n^] [n^] no

B. Fl.

there are no people

Senza Misura

airy
vocal fry

(♩ = 66)

4

S

ff *p* *ff* *mf* *p* *f* *p*

peo - ple [i] - [n] - [n^] [n^] [n] in the cars which drive by

B. Fl.

pizz. (p) ord. pizz. (t) ord. pizz. (t)

ff *mf* *ff* *mf* *p* *ff*

8vb.

5

S

mp

me

B. Fl.

ord. *p* *ff* *p*

6

S

f *mp* *f* *ff*

There are [n] - [n^] [n] [n^] [n] - [n^] [n] - [n^] [n] - [n^] [n] - [n^] [n] - [n^]

B. Fl.

p *ff* *p* *ff*

pizz. (t) ord. pizz. (t)

(♩ = 108)

Senza Misura

7

S *n* - - - - *ff* *p sub.* *p* - - - - *f* *p* *airy vocal fry*
 [n] - - - - no peo - ple [i] - [n] - [n^] [n^] [n^] [n^] [n^] [n^] [n^] [n^] the build - ings

B. Fl. *ord.* *ff* *pizz. (t)* *ord.* *mf* *f* *mf* *f*

8

S *f* *ff* *spoken* *f* *ff* *sim.*
 I walk past - [st] [empty] [n] - [n^] [n] - [n^] [n^] [n^] [n] - No [blank]

B. Fl. *mf* *f* *pizz. (t)* *ord.* *p* *mf* *pizz. (t)* *ff*

9

S *mf* *f* *3* *Senza Misura* *f* *ff* *mf* *p sub.* *f*
 The sun beats down [on empty mirror-] [mirrors] fill'd - [d^]

B. Fl. *f* *pizz. (t)* *ord.* *p* *mf* *[s]* *ff* *ff* *flz.* *spoken* *pizz. (t)* *f*

there are no people

10

S [with] *mf* *ff* [beautiful] *p* *f* *p sub.*
 [s] - sky un - at tain - [n] - a - ble

B. Fl. [*sim.* the] [a] [dying] *mf*
 [s]

11

S *f* *mf* *f* *mp*
 ex - pance [s] an arm's a - way [s] some - [m] - thing

B. Fl. [*mf* *f* *mp*] [length] *f* *mp*
 [s]

12

S *f* *ff* Senza Misura *p* *p* *mf*
 o - ver flow - ing with [n] - no - thing - [n] some [m] - - - thing

B. Fl. *f* *ff* *p* *p* *mf*
 [s]

13

S [whi-] [does] [me]

[tʃ] [n] - [n^] [n] - [na] - [tʃ] see

B. Fl. p pizz. (t) f [s]

14

S [city] [crowded] [no - [wʌ] [n^] [n^] [n^]

8vb. an emp - ty no - [wʌ] [n^] [n^] [n^]

ord. flz. flz. pizz. (t)

B. Fl. p ff [with] ff

15

S [one who comes from no where] [No!] [no one, who I may never see agai-]

[n] [n] [n]

ord. sung

B. Fl. [No!] [one who has no name]

[n^] ff

there are no people

16

S *mf* *mp* *ff* *mf* *f* *p* *p*

[n] [n^] In the re - - - - - tion - - - [n^]

B. Fl. *mf* *mp* *ff* *p*

17

S *ff* *p* *f* *p* *ff*

[of] [I can-] [see myself]

the eyes [n] [n^] not [s]

B. Fl. *ff* *p* *ff* *f* *ff*

[in] [no one] [s]

pizz. (t) *ord.*