

Connor Simpson

for Corey Sittinger

Purple Gap

Solo Vibraphone

2'

2022

Mere Fly Press

Purple Gap

Solo Vibraphone

2022

2'

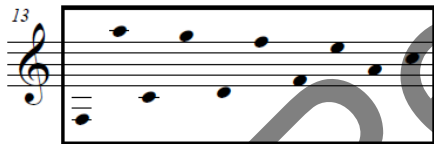
Connor Simpson

Mere Fly Press (ASCAP)

Program Notes:

Purple gap explores a sustained sentimental sonority. The piece opens freely. The opening harmony fades in softly and slowly. The piece begins to grow in speed and intensity until releasing into its most full and vibrant moment. The opening harmony then slowly fades away as the piece moves on.

Performance Notes:



Boxes throughout the piece are used to designate a selection of pitches to be improvised on for the specified duration



Feathered beams are used to represent a gradual growth or decrease in speed

- The piece should not suggest any meter. Whole notes do not represent four beats but simply a sustained sound. Eighth notes represent attack points and are beamed together to show phrases.

Purple Gap

for Corey Sitinger

Slowly, *molto rubato*
medium slow motor

ppp
Ped. →

4

mp

7

mf

10

Detailed description: This section contains the first ten measures of the piece. It begins with a grand staff (treble and bass clefs) showing a series of chords. The first measure is marked *ppp* and includes a pedal point indicated by a dashed arrow labeled 'Ped.'. Measures 4, 7, and 10 are marked with *mp* and *mf* respectively. The notation includes various rhythmic values and dynamic markings.

As Quickly As Possible

11

5"

ff

13

5"

5"

Detailed description: This section contains measures 11, 12, and 13. Measures 11 and 12 are boxed and marked *ff*. A long horizontal arrow spans from the end of measure 11 to the end of measure 12, labeled '5"'. Measure 13 is also boxed and marked *ff*. A long horizontal arrow spans from the end of measure 12 to the end of measure 13, labeled '5"'. A final '5"' is placed above the end of measure 13.

Slowing Down

16

ff

roll until all non-chord members stop resonating

17

p

mf

(Ped.)

lunga

Detailed description: This section contains measures 14, 15, 16, and 17. Measure 16 is marked *ff*. Measure 17 is marked *p* and includes a *lunga* marking above a long note. A dynamic marking of *mf* is placed below the staff in measure 17. A pedal point is indicated by a dashed arrow labeled '(Ped.)' at the end of measure 17. The instruction 'roll until all non-chord members stop resonating' is placed above the staff in measure 17.